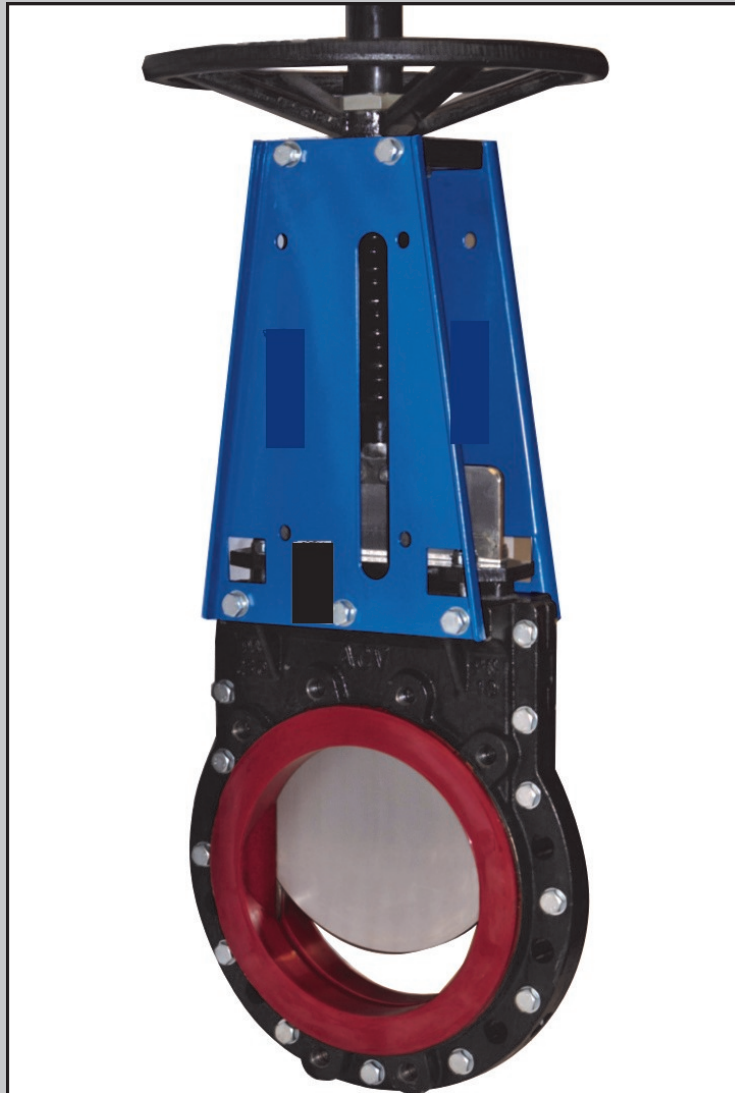
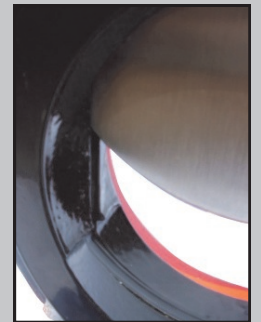


High Performance
KGV

SES High Performance KGV



Soft Rubber Lined



Epoxy Coated



Polyurethane Lined

Features

- Bi Directional
- Unrestricted Flow
- Wafer Ring Flanged Body
- Repack able Gland Stuffing Box
- PTFE Gland Scrapers
- Pedestal Facilitates
 - Locking
 - Proximity Switches
- Flange Drilling to Suite
 - SANS 1123 1000 (1000Kpa)
 - SANS 1123 1600 (1600Kpa)

Typical Applications

- Mineral Processing
- Mine tailings
- Slurries
- Pneumatic Conveying
- Paper pulps
- Cement
- Water Applications

Actuation Options

- Hand wheel
- Pneumatic Actuation
- Electric Actuation
- Hydraulic Actuation

17 Resnick Street,
Factoria,
Krugersdorp,
Gauteng.

Phone: +27 11 955 4690
sales@spirotech.co.za

www.spirotech.co.za

GPS: S26° 06,859'
E027° 48,680'

Technical Queries:
Martin Van Meygaarden
+27 82 903 2917
martin@spirotech.co.za

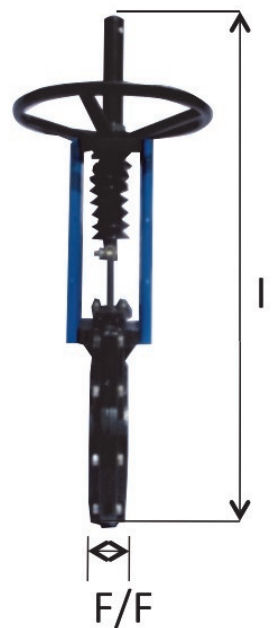
High Performance
KGV

Technical Details

Body	SG Iron (Ductile) – fusion bonded epoxy coated ±250 microns (standard) Optional coatings : halar, PTFE, glass, ceramics Available in AISI 304L / AISI 316L
Blade	AISI 304L stainless steel – polished (standard) Available in AISI 316L / Titanium / Rocktuff etc.
Rising Spindle	AISI 304L stainless steel – PVC bellow sealed with top spindle guard (standard) Optional 316L S/Steel
Rev Nut	Bronze – PB1 (Thrust Bearings standard on 300mm and bigger)
Pillar Plates	Mild steel fusion bonded epoxy coated ±250 microns (standard) Optional 304L-316L S/Steel
Gland Follower	Mild steel fusion bonded epoxy coated ±250 microns (standard) Optional 304L-316L S/Steel
Seals	Nitrile, reinforced , moulded (standard) (max temperature rating 90°C) Available in a variety of polymers and urethanes, PTFE
Hand Wheel and Top Plate	SG 42 Iron (Ductile) – fusion bonded epoxy coated ±250 microns (standard). Optional 304L-316L S/Steel
All Fasteners	Mild Steel Plated (standard) 304 Stainless steel 316L S/Steel (Optional)
Pressure Rating	DN50-DN150 = 1600 Kpa DN200-DN600 = 1000 Kpa
Optional Extras	Soft rubber lined bodies (SRL) Polyurethane lined bodies (PUL) Polyurethane deflecting cones Top works box enclosure covers
Gland Packing	Woven acrylic PTFE encapsulated (standard) Optional pure PTFE and variety of packing available

DN	F/F	SRL/PUL F/F	GØ	H	I	±Kg
65	46	52	255	370	560	18
80	46	52	255	400	600	21
100	52	58	255	435	650	22
125	56	62	255	500	695	25
150	60	68	300	560	850	31
200	72	80	400	665	1030	54
250	76	84	400	735	1170	90
300	80	88	500	860	1400	100
350	78	86	500	985	1610	125
400	100	108	500	1080	1760	190
450	100	108	700	1180	1930	225
500	110	120	700	1350	2200	260
600	130	140	1000	2100	3000	350

Dimensions:



17 Resnick Street,
Factoria,
Krugersdorp,
Gauteng.

Phone: +27 11 955 4690
sales@spirotech.co.za

www.spirotech.co.za
GPS: S26° 06,859'
E027° 48,680'

Technical Queries:
Martin Van Meygaarden
+27 82 903 2917
martin@spirotech.co.za